

essen-  
ziali

#perchisivuolebene



Lordflex's®

*dormire bene aiuta la vita*



# essen. ziali

*#perchisivuolebene*

ESSENTIALS is a selection of products composed by models that are indispensable and really needed in the show room for daily sale, purified from “superfluous” collections and products.

It's a true “synthesis” compared to the entire and too wide panorama of products that often confuses and makes it even more difficult the purchase choice of the final Customer.

With ESSENTIALS Lordflex's wants to make a synthesis, wants to suggest only those models that offer a real added value, making the purchase easier, faster, and devoid of uncertainties.

The ESSENTIALS project, it's also studied #perchisivuolebene. Its mattresses are designed to maximize the comfort of rest, to ensure the correct posture, to express the beauty and the design of the product, in addition to the convenience of use.

4 different models for various sensations of rest. 4 versions that offer the best you can expect from a quality mattress. The ESSENTIALS line #perchisivuolebene uses the best technologies and all the competences acquired over 56 years of Lordflex's business. A heritage of knowledge and doing that is embodied with skill and elegance in real artifacts of rest.

Sleep well helps life is the slogan that Lordflex's always transmits to its customers, and today wants to dedicate the new line ESSENTIALS to those who, loving each other, choose to sleep well!



1967

**Lordflex's®**

*dormire bene aiuta la vita*



# essenziali

#perchisivuolebene







# essenziali

#perchisivuolebene

1967  
**Lordflex's**  
*dormire bene aiuta la vita*



# essenziali

#perchisivuolebene





# PERFETTO (PERFECT), the mattress with integrated topper, at the price of the mattress only

The topper became a “wellness accessory”, essential for those who wish to maximize the comfort and the quality of their rest.

The traditional toppers, however, overlap with the mattress excessively increasing the height of the resting area, thus making it sometimes difficult or uncomfortable to get on the bed. In addition, toppers increase the mattress' thickness, creating a disproportion between mattress and headboard that penalizes the aesthetics and design of the bed. Moreover, adding a traditional topper, means that it is also

necessary to provide for the use of sheets suitable for high-thickness mattresses. Another drawback is that there is the possibility that, during the night, due to the movements of the person, the added topper does not always remain perfectly aligned to the mattress losing its correct position.

**PERFETTO, the new Lordflex's system with integrated topper proposed in 4 variants of comfort, offers maximum functionality and all the benefits of Topper, without any contraindication in use.**



## WINTER SIDE high-thickness surface



The Perfetto's winter side is in fabric composed of fine cashmere fibre, quilted with high thickness padding and memory in order to get a “topper effect”. This special stratification, soft and voluminous, creates and maintains

warmth, offering a warm and pleasant surface for the winter season. Moreover, adhering well to the body, is very cozy and welcoming as it wraps it perfectly in every part, offering an incomparable pleasure of rest.

## SUMMER SIDE With compact padding



The summer side, 3D Flat fabric and memory free, it's quilted with a special compact padding in cotton that does not wrap the body allowing a wide circulation of air that dissipates heat and ensures freshness during the summer season. In fact,

for a good breathability and to avoid sweating in the warmer months, it is always advisable to rest on a memory-free surface and choose padding not too adherent to the body.



# essenziali

*#perchisivuolebene*

**Perfetto 1700** 12  
micro springs – topper effect side

**Perfetto 850** 14  
ergonomic – topper effect side

**Perfetto Ap** 16  
high bearing capacity – topper effect side

**Perfetto foam** 18  
memory air – topper effect side



1967

**Lordflex's**  
*dormire bene aiuta la vita*





# Perfetto 1700

micro springs – topper effect side



## In brief

Independent micro-springs  
Winter side: cashmere fabric  
Winter side: topper effect  
Winter side: Wrap-around feeling  
Summer side: compact fiber for greater ventilation  
One side with memory air  
Self-modelling  
Physiologically correct sleeping position  
7 zones with different bearing capacities  
Anatomic

Anti-mites  
Removable cover  
Box system  
Washable at 40 degrees  
Air-conditioned  
Breathable and ventilated  
NFC Technology  
Deductible medical device.

**Rigid cardboard packaging.**

## Quality certificates



See the bearing-capacity table on page 30

## Support coefficient

## composition

### description of materials



#### WINTER SIDE – MEMORY TOPPER EFFECT

Knitted fabric composition: **fine cashmere wool** and **viscose of natural origin**. **Anti-mite, washable**, breathable, soft to the touch, high warmth in winter.

high thickness padding composed of a first contact layer of heat-accumulating **pure virgin wool** from shearing combined with All seasons Reticulate three-dimensional **High-Tech** padding, breathable, elastic and resistant to compression.

**High-breathability Memory Air layer** - perfectly self-modelling, non-deformable, microperforated, dehumidifying with open intercommunicating cells. Thickness **2 cm**.

Padded cover internal lining.

Covering fabric of the spring system.

**Microperforated dehumidifying** insulating layer made of non-deformable expanded high-density Polycell for perfect breathability.

Spring system with **7 zones of different bearing capacities** for different pressure points composed of **approximately 1700 independent micro-springs** (double bed). The springs, made of carbon steel wire with diameter 1.3 mm, are **tempered, self-modelling and enclosed in separate fabric pockets**.

**Microperforated dehumidifying box system** for perimetric support made of high-density non-deformable expanded Polycell.

**Microperforated dehumidifying** insulating layer made of non-deformable expanded high-density and high- bearing capacity Polycell for perfect breathability.

Covering fabric of the spring system.

Padded cover internal lining.

All seasons Reticulate three-dimensional **High-Tech** padding breathable, elastic and resistant to compression.

Heat-diffusing summer padding made of **pure staple cotton**.

3D Flat knitted fabric: **Anti-mite and washable**.



Thickness: 26 cm

Winter side with memory air

Independent microsprings with differentiated comfort zones

Removable cover PERFETTO 1700





# Perfetto 850

Ergonomic – topper effect side



## In brief

Independent micro-springs  
Winter side: cashmere fabric  
Winter side: topper effect  
Winter side: Wrap-around feeling  
Summer side: compact fiber for greater ventilation  
One side with memory air  
Self-modelling  
Physiologically correct sleeping position  
7 zones with different bearing capacities  
Anatomic

Anti-mites  
Removable cover  
Box system  
Washable at 40 degrees  
Air-conditioned  
Breathable and ventilated  
NFC Technology  
Deductible medical device.

## Quality certificates



See the bearing-capacity table on page 30

## Support coefficient

## composition

### description of materials



#### WINTER SIDE – MEMORY TOPPER EFFECT

Knitted fabric composition: **fine cashmere wool** and **viscose of natural origin**. **Anti-mite**, **washable**, **breathable**, soft to the touch, high warmth in winter.

high thickness padding composed of a first contact layer of heat-accumulating **pure virgin wool** from shearing combined with All seasons Reticulate three-dimensional **High-Tech** padding, breathable, elastic and resistant to compression.

**High-breathability Memory Air** layer - perfectly self-modelling, non-deformable, microperforated, dehumidifying with open intercommunicating cells. Thickness **2 cm**.

Padded cover internal lining.

Covering fabric of the spring system.

**Microperforated dehumidifying** insulating layer made of non-deformable expanded high-density Polycell for perfect breathability.

Spring system with **7 zones of different bearing capacities** for different pressure points composed of **approximately 850 independent springs** (double bed). The springs, made of carbon steel wire with diameter 1.8 mm, are **tempered**, **self-modelling** and **enclosed in separate fabric pockets**.

**Microperforated dehumidifying box system** for perimetric support made of high-density non-deformable expanded Polycell.

**Microperforated dehumidifying** insulating layer made of non-deformable expanded high-density and high-bearing capacity Polycell for perfect breathability.

Covering fabric of the spring system.

Padded cover internal lining.

All seasons Reticulate three-dimensional **High-Tech** padding breathable, elastic and resistant to compression.

Heat-diffusing summer padding made of **pure staple cotton**.

3D Flat knitted fabric: **Anti-mite and washable**.



Winter side with memory air



Independent pocket springs with differentiated comfort zones



Removable cover PERFETTO 850

Thickness: 26 cm





# Perfetto Ap

High bearing capacity – topper effect side



## In brief

With mini-Bonnell springs  
High bearing capacity  
Orthopedic  
Winter side: cashmere fabric  
Winter side: topper effect  
Winter side: Wrap-around feeling  
Summer side: compact fiber for greater ventilation  
One side with memory air  
Self-modelling  
Physiologically correct sleeping position

Anti-mites  
Removable cover  
Box system  
Washable at 40 degrees  
Air-conditioned  
Breathable and ventilated  
NFC Technology  
Deductible medical device

## Quality certificates



See the bearing-capacity table on page 30

## Support coefficient

## composition

### description of materials

#### WINTER SIDE – MEMORY TOPPER EFFECT

Knitted fabric composition: **fine cashmere wool** and **viscose of natural origin**. **Anti-mite, washable**, breathable, soft to the touch, high warmth in winter.

high thickness padding composed of a first contact layer of heat-accumulating **pure virgin wool** from shearing combined with All seasons Reticulate three-dimensional **High-Tech** padding, breathable, elastic and resistant to compression.

**High-breathability Memory Air** layer - perfectly self-modelling, non-deformable, microperforated, dehumidifying with open intercommunicating cells. Thickness **2 cm**.

Padded cover internal lining.

Covering fabric of the spring system.

**Microperforated dehumidifying** insulating layer made of non-deformable expanded high-density Polycell for perfect breathability.

White compact insulating layer made of carded, pressed, thermofusedfibres.

**HIGH BEARING CAPACITY: Mini Bonnell** high-density spring system with **high bearing capacity** composed of approximately **650 biconical tempered springs** (double bed) made of carbon steel wire with diameter 2 mm and connected by carbon steel wire spirals with diameter 1.3 mm.

**Microperforated dehumidifying box system** for perimetric support made of high-density non-deformable expanded Polycell.

White compact insulating layer made of carded, pressed, thermofusedfibres.

**Microperforated dehumidifying** insulating layer made of non-deformable expanded high-density and high-bearing capacity Polycell for perfect breathability.

Covering fabric of the spring system.

Padded cover internal lining.

All seasons Reticulate three-dimensional **High-Tech** padding breathable, elastic and resistant to compression.

Heat-diffusing summer padding made of **pure staple cotton**.

3D Flat knitted fabric: **Anti-mite and washable**.



Winter side with memory air



Handle with areators



Removable cover PERFETTO AP

Thickness: 26 cm





# Perfetto foam

memory air – topper effect side



## In brief

Memory air structure  
With ventilation channels  
Self-modelling  
High adaptability to body shapes  
Winter side: cashmere fabric  
Winter side: topper effect  
Winter side: Wrap-around feeling  
Summer side: compact fiber for greater ventilation  
One side with memory air  
Ergonomic  
Physiologically correct sleeping position

Elastic  
Suitable for articulated bed bases  
Anti-mites  
Removable cover  
Washable at 40 degrees  
Air-conditioned  
Breathable and ventilated  
Eco-friendly  
NFC Technology  
Deductible medical device

## Quality certificates



See the bearing-capacity table on page 30

## Support coefficient

## composition

### description of materials

#### WINTER SIDE – MEMORY TOPPER EFFECT

Knitted fabric composition: **fine cashmere wool** and **viscose of natural origin**. **Anti-mite, washable**, breathable, soft to the touch, high warmth in winter.

high thickness padding composed of a first contact layer of heat-accumulating **pure virgin wool** from shearing combined with All seasons Reticulate three-dimensional **High-Tech** padding, breathable, elastic and resistant to compression.

**High-breathability Memory Air** layer - perfectly self-modelling, non-deformable, microperforated, dehumidifying with open intercommunicating cells. Thickness **2 cm**.

Padded cover internal lining.

Protection lining of monoblock.

**High-breathability Memory Air**. It distributes the body's weight and shape, thus relieving any tension and compression for a natural sleeping position. Eco-friendly and resistant to deformation with antibacterial treatment. Wave processing for **air renewal**. **Density 40 kg/m3**. Medium thickness **4,5 cm**.

**Waterform Heliocell** hygienically treated against mites, bacteria, mildew and bad smells, high bearing, eco-friendly, resistant to deformation, self-modelling, **highly breathable**, microperforated with open intercommunicating cells; **density 30 kg/mc**. Through channels processing for air renewal. Thickness **7 cm**.

**Breathable microcellular Waterform**. Ensures excellent deep bearing capacity and non-deformability over time. Hygienically treated against mites, bacteria, mildew and bad smells, eco-friendly and self-modelling; **density 30 kg/mc**. Wave processing. Thickness **7 cm**.

Protection lining of monoblock.

Padded cover internal lining.

All seasons Reticulate three-dimensional **High-Tech** padding breathable, elastic and resistant to compression.

Heat-diffusing summer padding made of **pure staple cotton**.

3D Flat knitted fabric: **Anti-mite and washable**.

Three-layer structure with Memory Air and breathable through



Memory air layer



Breathable through channels



Removable cover PERFETTO FOAM

Thickness: 26 cm

Lordflex's





# infotech

Sustainability	22
Starry quality	23
Volatile Organic Compounds (VOCs)	24
Medical Device	25
Cashmere, Wool and Cotton	26
Independent spring and ap Bonnel spring	27
Catas/Cosmob 50000 cycles	28
Certificates	29
Table of bearing capacities	30
Warnings and regulations	31





# Sustainability, environmental impact and eco-design

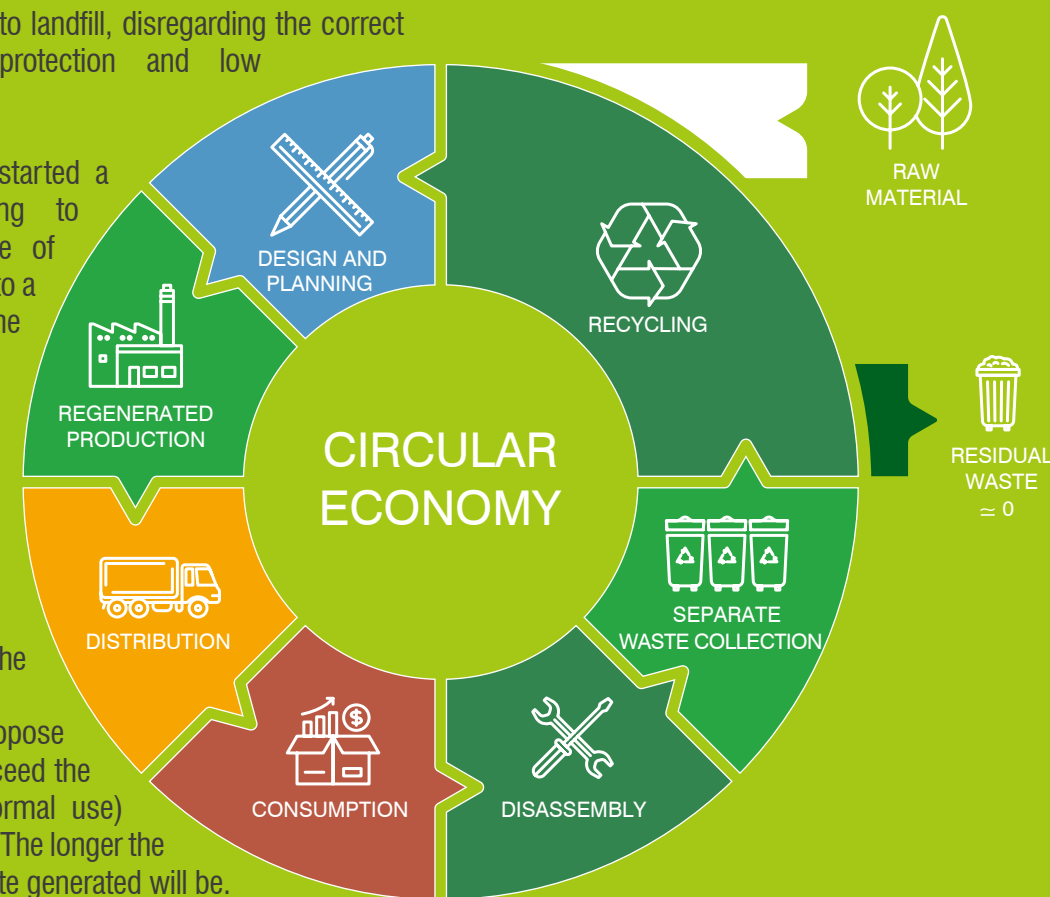
Every year, in Italy, 5/6 millions of mattresses are replaced as they are old or damaged, and therefore no longer usable. Until a few years ago, all of these were sent to landfill, disregarding the correct principles underlying the environment protection and low environmental impact.

In contrast, for some time Lordflex's has started a planning and production path according to eco-design criteria. These involve the use of materials and industrial processes that brings to a total disassembly of the final product and to the subsequent reuse of its components.

Today Lordflex's guarantees that its products, composed by natural fabric, wadding, water form, steel springs, etc., are 95% recoverable to manufacture new products if placed in the correct recycling chain.

Other important aspect, to protect the environment, it's the product's durability. For this reason, since forever, Lordflex's propose mattresses and bed systems designed to exceed the strict endurance tests (over 15years of normal use) performed at Catas and Cosmob laboratories. The longer the life of the product, the less the amount of waste generated will be.

Thanks to these choices, the Lordflex's products that reach the end of the cycle enter a virtuous process of circular economy the extraordinary result of this process consists in a percentage of unusable waste, intended for disposal, close to 0. So, at the end of its life, the Lordflex's mattress is not thrown, it is transformed.



## Starry Quality: a new clear and detailed assessment criteria.

Since 1988, the Consortium "Italian Association of Producers of Quality Mattresses" certifies hygiene, safety, durability, and suitability requirements of the materials used in the manufacture of mattresses and bed components.

Today, thanks to the "rating Stars", it is even easier to identify the quality of the mattress that you are buying, being able to easily compare it with other similar products. We didn't stop at the traditional laboratory tests which measure the resistance to efforts and to the duration: in fact, we added other important quality assessments:

### HEALTH AREA

Aspects relating to the performance of the mattress in terms of environmental decontamination and prevention of physical discomfort, which both affect the quality of sleep.

### SECURITY AREA

Aspects relating to the suitability, safety, and certainty of the origin of the mattress in relation to its destination of use.

### DURABILITY AREA

Aspects relating to the ability of the mattress to keep its performance and its basic characteristics constant over time.

### CONSTRUCTION MATERIALS AREA

Aspects that concern, for the different types of mattresses, the physical characteristics of the materials and individual components used.

### CONSTRUCTION CHARACTERISTICS AREA

Aspects relating to the manufacturing care and finish level of mattresses, according to the quality and physical characteristics of the materials used.

### LEGISLATIVE PROVISIONS AREA

Informations accompanying the single mattress, according to current regulations, for consumer protection.

## Qualità Stellata



*The more the stars,  
the higher the quality of the mattress*

The quality level is graphically represented by the number of the stars assigned to each mattress.



### Three stars

Quality mattresses that meet all the requirements of hygiene, safety, and resistance to use.



### Four stars

Quality mattresses that, in addition to meet all the requirements, are made with high quality materials.



### Five stars

Quality mattresses designed to obtain maximum yield and to satisfy high comfort performance requirements.



### Six stars

High quality mattresses, thanks to an innovative design and to an accurate manufacturing.



# Volatile Organic Compounds (VOCs)

## safety and health

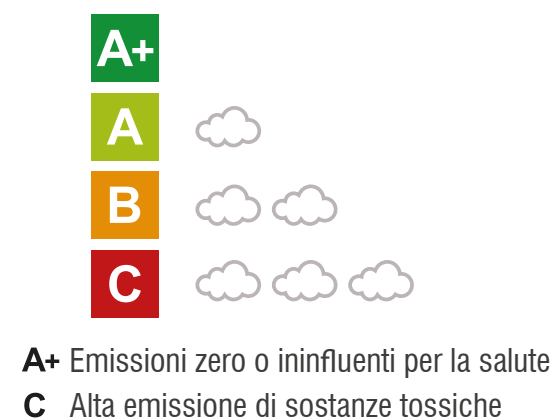
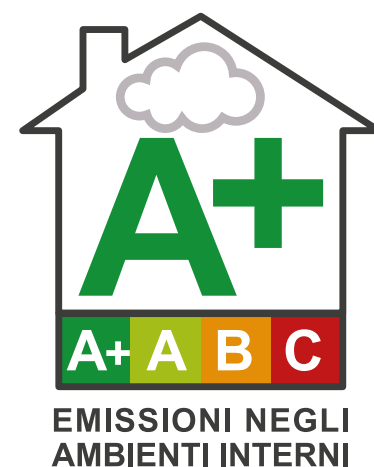
Volatile compounds are complex chemical mixtures normally present in all the materials used to manufacture finished products.

The list of the chemicals in the materials is a long one, the best-known elements being: aliphatic hydrocarbons, aromatic hydrocarbons (benzene and derivatives), chlorinated hydrocarbons (chloroform, chlorobenzene), alcohol (ethanol, butanol) and formaldehyde. **Everything in our homes (paints, floors, furniture, carpets, insulation and building materials, mastic, shutters and frames, upholstery, fabrics etc) comprises volatile substances which over time are released and easily evaporate at room temperature.**

Several countries - not yet Italy - are required to affix to all marketed products a label identifying the level of emission of said volatile compounds. **Exposure to products with a high emission of volatile substances can cause severe damage to your health** - both acute and chronic - such as headache, eye/nose/throat irritation, damage to kidneys, liver and nervous system, and even much more severe pathologies.

**Strict laboratory tests as specified in UNI EN ISO 16000-9 need to be performed in order to determine the emission level of each product.** The product is positioned in a temperature- and humidity-controlled test chamber for 28 days. Subsequently any output air is analysed. The analysis makes it possible to classify the product according to emissions as A+, A, B, C.

When you purchase a new mattress, for the sake of your own health you should always rule out manufacturers that do not perform any tests aimed to determine the emission level of volatile substances and instead opt for Class A+ products. **Lordflex's has had its main catalogue products certified and has achieved the best classification possible.**



# Medical Device

## Class 1

Some mattresses, bed bases, sommier beds and pillows from the Lordflex's collection are classified as and marked "**Dispositivo Medico Classe 1**" ("**Medical Device Class 1**"). The Italian Ministry of Public Health defines a Medical Device as any tool that usefully helps people prevent, treat and mitigate specific pathologies.

The topic is regulated by European Directive 93/42/EC and 2007/47/EC as acknowledged in Italy by Legislative Decree No. 37 dated 25th January 2010.

According to Italian tax regulations (Income Tax Act TUIR - art. 15, par. 1, letter C), **any qualified person**, whenever they purchase a product classified as and marked "Medical Device Class 1" and registered with the Ministry of Public Health, **will be entitled to deduct the relevant medical sanitary cost from their income tax return as allowed by the applicable regulation**, on submitting the relevant medical certificate.

Products certified as "Dispositivo Medico Classe 1" must always have the **CE Marking** too, which is compulsory for any products manufactured and marketed in EU countries in compliance with an EU Directive on product safety requirements.





# Cashmere, Wool and Cotton

## materials

**Cashmere wool** - Cashmere wool is obtained from goats that have a valuable fleece and can survive in a very challenging environment characterised by cold windy winters and torrid summers. As a consequence their thick soft wool is very thin. Cashmere fibres are well-known for their lightness and heat-insulating properties.

**Wool** - Textile fibre of animal origin obtained from the sheep fleece, it has insulating and water-absorbing properties. Wool fibres can absorb water up to 33% of their weight, leaving no wet feeling. Wool also has natural thermoregulating properties and keeps your body temperature constant in all seasons: in summer it insulates the body from external heat, while in winter it retains warmth. This fibre is remarkably resistant to wear and tear. Lordflex's uses Pure Virgin Wool, which is sanitised, carded and pressed. We never use recovered or regenerated wool.

**Cotton** - A textile fibre of vegetable origin, it comes from the cotton flock, precisely from the hair covering the seeds growing inside the plant's flower. The flower's seeds and vegetation get caught in the padding fibres, testifying to the material's natural origin. Although the most widely used natural fibre in the textile industry, it has been used in several other industries too.

Even in its original form it has very good qualities: it is a good heat conductor and is consequently used to dissipate any warmth produced and accumulated by your body. It is a good solution for the fresh summer padding of a mattress. Lordflex's always uses sanitized, carded and pressed cotton. We never use recovered or regenerated wool.



# Independent spring and AP bonnel spring

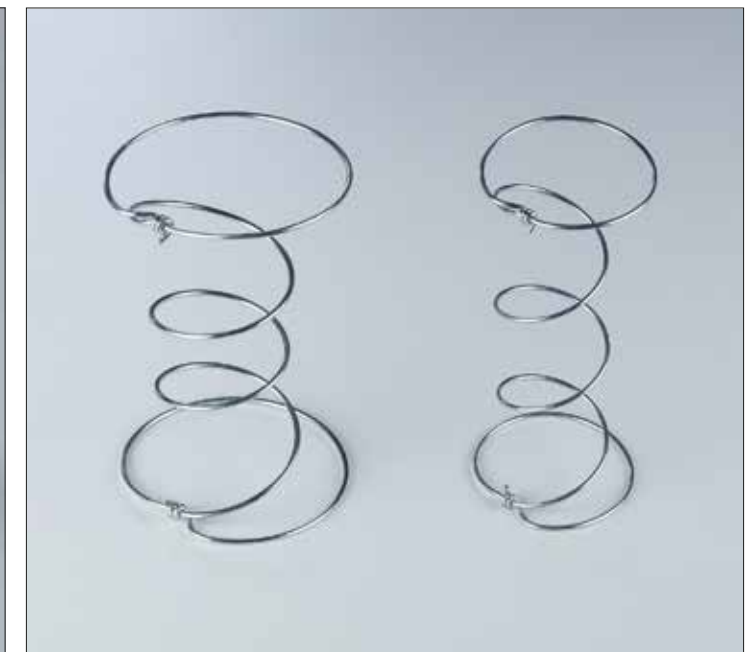
## materials

**Independent spring** Springs are one of the key elements of a mattress. There are different types of springs available. Lordflex's uses only tempered phosphated carbon steel wire. The tempering process plays a fundamental role, because it strengthens the steel and makes it non-deformable over time, thus avoiding those unpleasant depressions in the mattress surface due to a sagging spring system. The springs make up the bearing structure that, together with the cushioning layers, support the loads and stresses during sleep.

Pocketed springs are the most sophisticated solution in ensuring an ideal performance and a higher quality of sleep. Each spring is enclosed in a fabric "pocket" that links it safely to the other springs. However, each spring is separate and moves independently from adjacent springs in order to follow the body shape rather than the shapes produced by the surrounding springs. Thanks to its small circumference, it is possible to create different structures: bearing structures as composed of 1700 or 850 elements (double bed) with different comfort and ergonomic levels; and surface structures such as the low-thickness small microspring toppers used for the mattress's contact surface.

**Ap bonnel spring** Made of tempered phosphated carbon steel wire, with diameter 2.2 or 2.0. The tempering process plays a fundamental role, because it strengthens the steel and makes it non-deformable, thus preventing those unpleasant depressions in the mattress surface due a sagging spring system, especially in the areas bearing heavier loads. The springs are held together in line by wire spirals. The spring system acts as the bearing structure of the mattress and the anchoring support of the padded layers.

The AP Bonnel spring system is made of 650 springs (double bed). With Bonnel springs it is possible to produce anatomic mattresses with with high bearing capacity.





# Catas/Cosmob 50000 Cycles

## how to become a quality mattress

For an objective assessment of its quality, a mattress undergoes laboratory tests according to UNI standards that simulate the conditions of use during sleep.

There are **two different types of tests: a dimensional test and a durability test**. The durability test is carried out using equipment that repeatedly applies loads and movements, **thus simulating the actual use of the mattress at home during sleep for a period of 15 years**.

**The test was designed to assess any variation in the mattress's properties following actual usage as simulated by a roller with a total mass of 140 kg.**

The mattress is positioned in a temperature- and humidity-controlled conditioning cell simulating the conditions of the human body and the environment. After 21 days in the cell, the mattress is ready for the roller test.

Before the beginning and at the end of the test, the load-strain curve, the stiffness value (i.e. resistance to flattening as caused by a pad with suitable shape and size) and the height of the mattress are assessed.

**At the end of the test the components of the test mattress are expected to be undamaged, without any loss in either height or bearing capacity.**

**As a further guarantee for the customers, the Consorzio produttori materassi di qualità has adopted a protocol whose durability test provides for as many as 50.000 cycles, i.e. 66% more than specified by the CEN.**

Only the products that passed the fatigue test will be granted the certificates and logos CATAS, COSMOB and CONSORZIO PRODUTTORI MATERASSI DI QUALITÀ.



# Certificates



Marking of Italian Producers of Quality Mattresses. It certifies only those products that passed strict laboratory tests as required by the Association's provisions.

Sistema di Gestione della Qualità  
Certificato UNI EN ISO 9001:2015

Lordflex's adopts the UNI EN ISO 9001:2015 certified Quality Management System.



This Marking identifies the level of volatile substances emitted by any product into the environment.



Identification Marking of the Catas Laboratory, where mattresses undergo resistance and durability tests, including special wear stress tests.



Identification Marking of the Cosmob Laboratory, where mattresses undergo resistance and durability tests, including special wear stress tests.



This International Technical Body sets the standards to define and identify quality testing and measurement parameters.



International Marking for products exclusively using precious 100% Pure Cashmere Wool padding.



International Marking for products with padding exclusively made of Pure Virgin Wool.



International Marking for products exclusively using 100% Pure Natural Staple Cotton padding.



This Marking identifies sleeping systems comprising 7-zone structures with different bearing capacities for the main parts of the body.



"Eurolatex Eco Standard" is a regulatory body for the certification of the quality and eco-friendliness of latex in compliance with the laws in force in the European Community.



This Marking identifies sleeping systems that are considered as Medical Devices by the Italian Ministry of Public Health and are subject to tax relief.



"Oeko-Tex Standard" 100 is a regulatory body for the certification of quality and respect for the environment during fabric production in compliance with the laws in force in the European Community.



Identification Marking for products manufactured and marketed in the countries of the European Community in compliance with safety requirements.



# Table of bearing capacities

The TABLE OF BEARING CAPACITIES is a useful tool to select the ideal mattress for your biotype. By matching your weight to your height, you will get a figure (10-15-18 or 22) that represents the support coefficient your mattress should have. You can find this coefficient in the different Product Technical Sheets. Therefore, when purchasing a product, just choose among those with your own support coefficient according to the table of bearing capacities. The support coefficients were calculated based on scientific laboratory measurements of the bearing capacity. It stands for the grams per square centimetre that the mattress can bear. The different use of the various structural materials gives the following bearing capacities: 10, 15, 18 or 22 grams per square centimetre.

Height in cm	Weight in kg						
	Less than 50	50/55	55/65	65/75	75/85	85/95	More than 95
Less than 155	15	15	15	22	22	22	22
155/165	10	15	15	18	22	22	22
165/175	10	15	15	15	18	22	22
175/185	10	15	15	15	18	22	22
185/195	10	10	15	15	18	18	22
More than 195	10	10	10	15	18	18	22

<div>10</div> <div>Nido baby Capriccio Piuma</div>	<div>15</div> <div>Bliss (MP spring system) Lady soft Oblio Mp Nuvola Aquagel Clorofilla Elisir Bios</div>	<div>18</div> <div>Perfetto 1700 Perfetto 850 Perfetto foam Anniversario 50 Dormiglione Bliss (independent spring system) Vanity Cover Lady Memory Lady Più Strabilio Memory Aquasan Melody Wellness Fitness Mariana's Bios Crine</div>	<div>22</div> <div>Perfetto 650 Bliss (AP spring system) Brio Oblio Ap Smart</div>
--	--	---	--

# Warnings and regulations

## Mattresses

Price calculation system for oversized mattresses:  
**Width in cm X length in cm X coefficient per sq cm = price.**

Some measures of **Perfetto foam** can be made by cutting and gluing the inner panel, as there are no panels sized to every possible measure that can be requested by the Customer. However, this process does not change the quality and functionality of the product in any way.

Replacement of the padded cover for removable mattress, price is 40% of the quotation of the entire product.

Replacement of the internal structure for removable mattress, price is 60% of the quotation of the entire product.

Two sides both with the same padding + € 50 regardless of the size of the mattress.

Removable cover mattresses with one external cover and two internal structures + € 30 for each bed.

**For oversized items smaller than 80x190 cm, always request a quote.** For some sizes and models, in fact, the coefficient per sq cm is not appropriate.

For all Perfetto models: maximum width 200 cm and maximum length 220 cm.

## For Your ORDERS:

Fax 0731 878155  
Tel. 0731 879466/7  
comm@lordflex.com

This price list is added to the Lordflex's General Catalogue.

Prices are EX-Works.

Lordflex's reserves any variation of the products and prices published.



Graphic design and layout **Immaginario di Giovanna Fracascia**  
Coordination **Ernesto Bini**  
Photography **Maurizio Paradisi** in collaboration with **Ufficio Tecnico Lordflex's**  
Photolithography and photocomposition printing **bBold srl**  
In collaboration with **Ufficio Tecnico Lordflex's**

Finished printing in March 2023







**Lordflex's s.r.l.**

Via Carrara, 11 - S.p. 360 km 23  
60030 Serra de' Conti (AN) Italy  
Lat. 43.566583 | Long. 13.03910

Tel. (+39) 0731 879466/7

Fax (+39) 0731 878155

[info@lordflex.com](mailto:info@lordflex.com)

[www.lordflex.com](http://www.lordflex.com)

 Lordflexs  Lordflex's

Sistema della Qualità Certificato

UNI EN ISO 9001:2015

**100% MADE IN ITALY**